

THE SUMMER

BY MATCH

BEFORE COMPUTER GAMES,
GLOBAL WARMING AND
\$200 CONCERT TICKETS

REMEMBER WHAT SUMMER
USED TO BE LIKE?



THE BEACH WAS OUR PLAYGROUND



BEACH UMBRELLA, c1950

The classic beach accessory has been adding colour to our white beaches for over half a century.



SWAN LAGER TINNIE, 1983

Back when beer came in real cans with a ring you had to pull. None of that Eastern States stuff, let alone imported. Swan or Emu, that was your choice.

When did things get so complicated? Wouldn't it be nice if we could get back to basics, back to what's truly important. Imagine a simpler life. Imagine living with the beach practically on your doorstep and being close to a great community of cafés and shops. Welcome to The Summer by Match, South Beach Village, South Fremantle.



ESKY, c1960

Originally manufactured by Malley's of Sydney, the Esky is a marvel of Australian engineering.

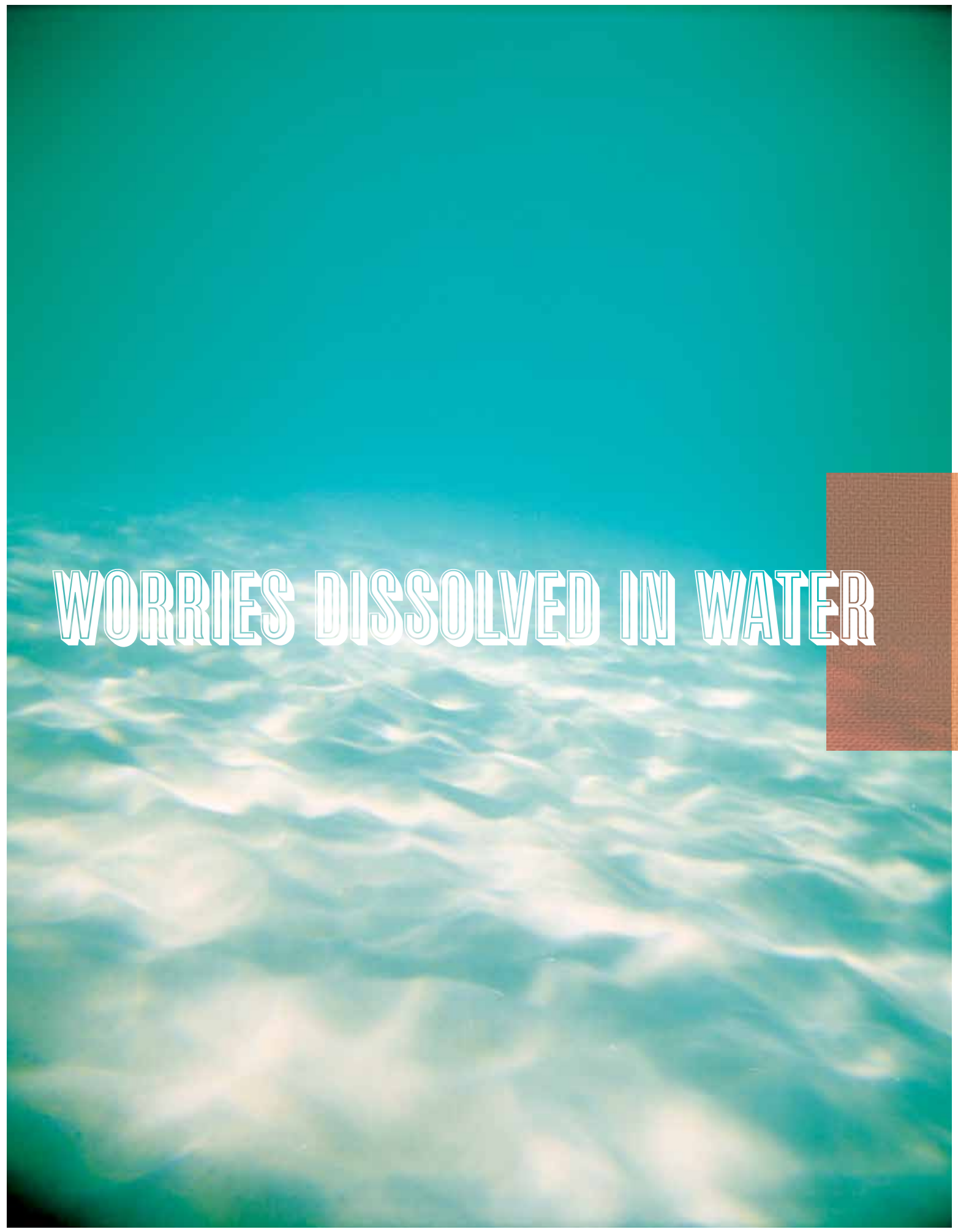


SURFING, c1950


Although the first boards arrived in Australia from Hawaii in 1915, it wasn't until post-WWII that surf culture really took off.



There's no denying it, we have been on a real estate roller coaster. But now's a time of opportunity for those who can recognise it when it comes knocking. History is the best indication of the future. If we can learn anything from the history of the Perth market it is that, collectively, we love the water. Especially the beach. A well-designed, well-built property near a beautiful beach will, through the ups and downs, hold its value. This is philosophy that has guided the development of The Summer.



WORRIES DISSOLVED IN WATER



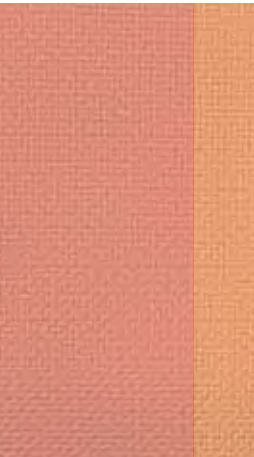
THIS IS WHAT
LIVING IN THE WEST
WAS ALL ABOUT

IMAGINE IF YOU COULD FEEL THAT WAY AGAIN



REEF OIL, c1970
Before slipping, slopping and slapping there was Reef Oil. The coconut smell will forever be synonymous with the hedonistic 70s.

OAKLEY FROGSKINS, 1986
You wouldn't have been seen dead on the beach in anything else in the late '80s.

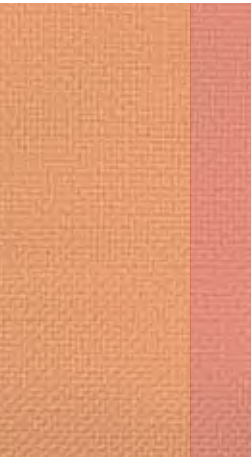
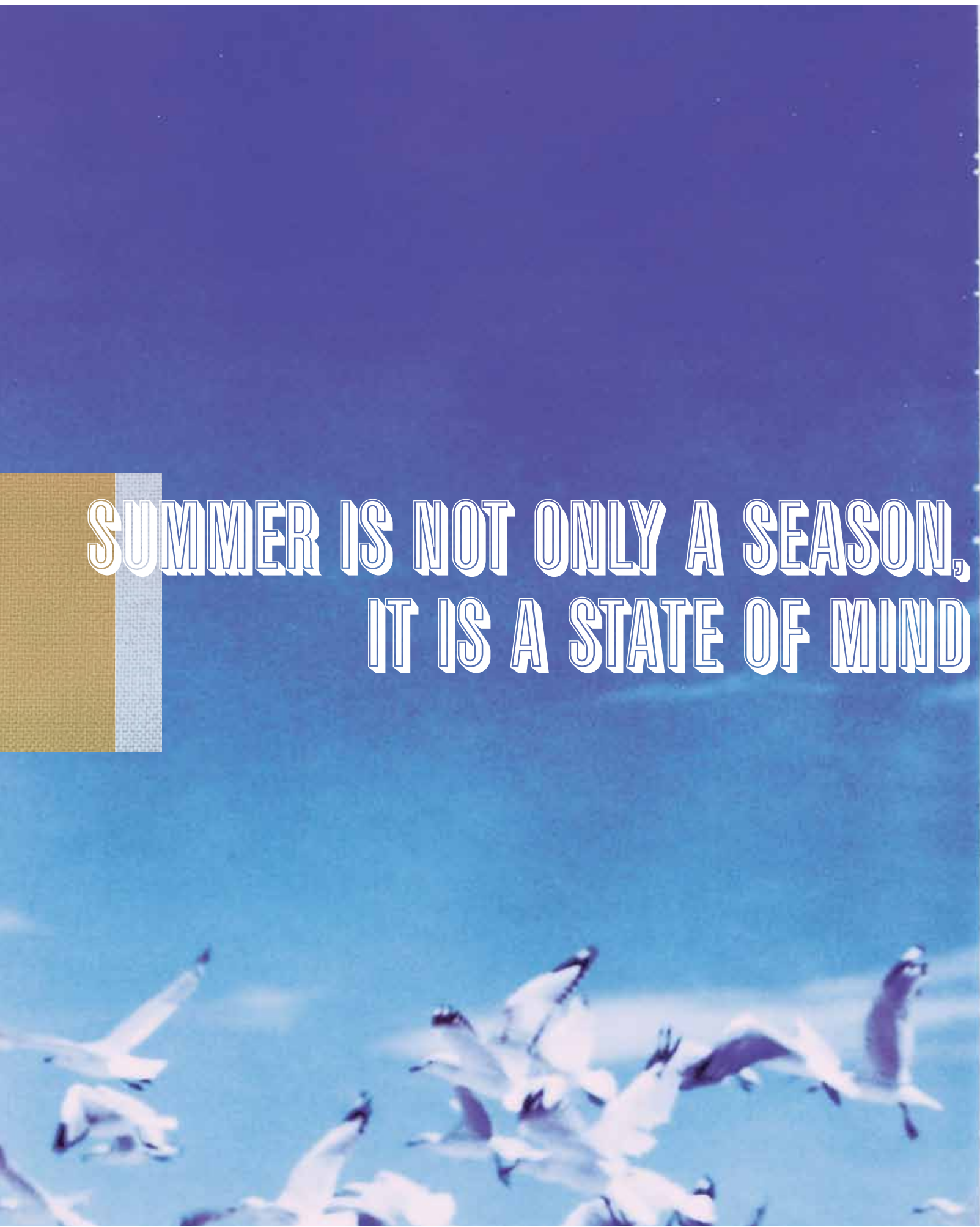


Multi-award winning architects Donaldson+Worn have planned a building that is the first Green Building Council of Australia pilot project in Western Australia for medium density building and has a target five-star green rating. So what does this mean for you? The Summer has been designed for how we live in the West. It has been designed for our climate. It means the building will be naturally cooler in summer and warmer in winter. It means lower energy bills and more natural light and air. Ultimately, you will be doing your bit to help protect the pristine beaches that make our city such a wonderful place to live.



Only three kilometres from the centre of historic Fremantle and twenty from the heart of the CBD, The Summer boasts an unbeatable location. Overlooking a feature lake and a wonderful park, just a moment's walk from the beach, with views across to the ocean, this will be the perfect home for those who want to combine luxury with an active life. This premium site sits at the gateway to the new South Beach Village and design's large decks and courtyards take full advantage of this exciting location.

SUMMER IS NOT ONLY A SEASON,
IT IS A STATE OF MIND



About Match

Match is a boutique developer specialising in design-focused residential and commercial projects.

Match creates buildings that are sensitive to both the heritage and urban environments and are contemporary statements in functionality and style.

What makes for a successful boutique development? For Match the answer is two-fold; we create wonderful spaces that you want to live in today, and buildings that are well-constructed and beautifully appointed so they provide you with the returns you desire in the future. Put simply, quality means security.

Although each Match project is quite different stylistically, there are some fundamental design principles to which we always adhere;

Superior finishes. We carry our commitment to long-term returns through to all interior treatments. Every Match apartment features quality, classic fixtures and finishes throughout. We create simple, 'timeless' interiors that will accommodate any personal taste into the future.

The effective use of natural light. Not only does this make Match apartments more pleasant to live in but it also serves the environment by cutting down on the need for artificial heating and cooling.

Security. Our developments feature well-lit, secure entrances and parking areas.

Creating liveable neighbourhoods through the design of mixed-use buildings that add amenity and life to the street.

About the Architect

Donaldson+Warn has been operating in Perth, Western Australia for over 25 years. The practice's work, which spans a wide variety of commissions across the disciplines of architecture, urban design, master planning, interior architecture and public art, has been extensively featured in national and international publications.

Donaldson+Warn is one of Perth's most highly awarded architectural studios with two George Temple-Poole Awards (the highest architectural award in Western Australia), the Premier's Award, the National BHP Award, a national urban design award, the Ministers Award for Planning, and numerous citations for civic design, architecture and interior design.

Founded on a commitment to the value of ideas and their realisation, Donaldson+Warn has grown in reputation to become one of Australia's leading design firms.

Match

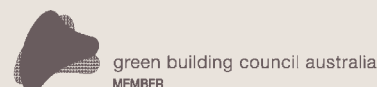
Suite 1, 464 Murray Street
Perth WA 6000
Telephone: +61 (0)8 9324 3855
Fax: +61 (0)8 9324 3866
itsaMatch.com.au

Sales Enquiries

Telephone: +61 (0)8 9324 3855
Email: Info@TheMatchGroup.com.au

The Summer

Cnr South Beach Promenade
and Keeling Way
South Fremantle
Western Australia 6051



© 2009, The Match Group. This brochure has been prepared in good faith however the accuracy of the information is not warranted by the developer. Recipients of the brochure should make their own enquiries and refer to the sales contract. Building perspectives contained herein are artist impressions. Design by Block (BlockBranding.com).